

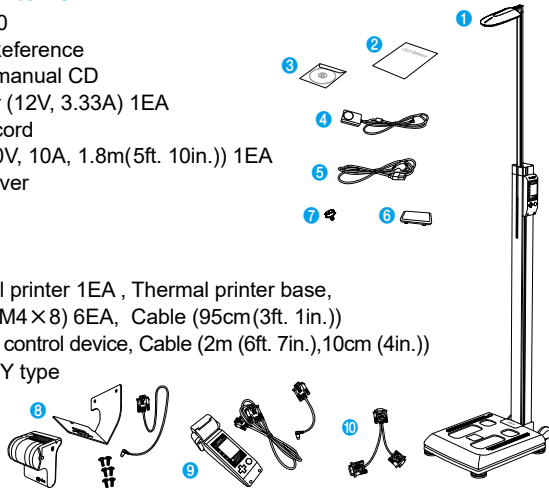
BSM370 Quick Reference

Included Items

- 1 BSM370
- 2 Quick Reference
- 3 User's manual CD
- 4 Adapter (12V, 3.33A) 1EA
- 5 Power cord (AC 250V, 10A, 1.8m(5ft. 10in.)) 1EA
- 6 Joint cover
- 7 Screw

Optional

- 8 Thermal printer 1EA, Thermal printer base, Screw (M4×8) 6EA, Cable (95cm(3ft. 1in.))
- 9 Remote control device, Cable (2m (6ft. 7in.), 10cm (4in.))
- 10 Cable - Y type



Remote control device is provided with thermal printer which is attached on.

Workplace requirements

- Location: Indoor use only. Any outdoor area where the equipment is to be located should meet all the conditions below.
- Operation environment: 10~40℃ (50~104°F), 30~75%RH, 70~106kPa
- Adapter: Power Input 100~240V, 50/60Hz, 1.2A
Power Output DC 12V, 3.33A



Please check the height from the ground to the ceiling before installing BSM370. It should be at least as tall as 2156mm (84.9in.). BSM370's height is 2126mm (83.7in.).

Note on Unpacking & Assembling

- (1) Place the BSM370 on level ground.
- (2) Do not move by holding the head bar or operation part with LCD.

1. Open the box

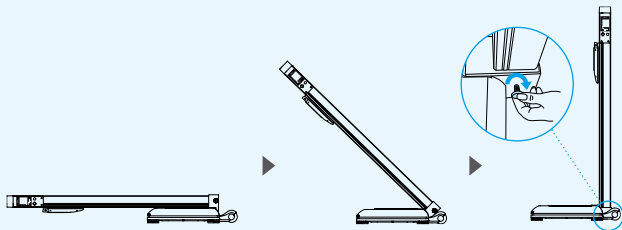
Open the packing box and remove the wrapping. Take out all contents.



Save the wrapping material after unpacking in the event of relocation.

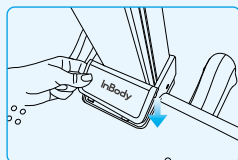
2. Raise the stand of the BSM370

- 1 Raise the stand of the BSM370 carefully until it stands upright. Tighten the joint screw connecting stand body and foot plate.



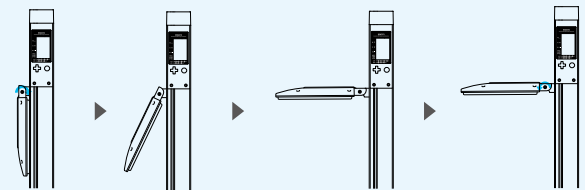
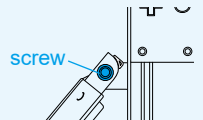
In case of a loose connection between the stand body and the foot plate, measurement process cannot be performed properly. Fix the stand perpendicular on the foot plate.

- 2 After the upper part of the BSM370 is fixed, close the joint cover.



3. Fixed the head bar

- 1 Unscrew the fixed screw at the head bar part and uplift it by 90 degree.
- 2 Screw tightly.



- 3 Once head bar is fixed, please remove the sticker attached to it.



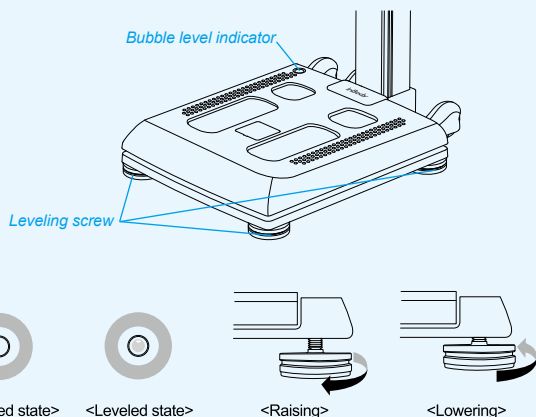
Do not lift the head bar to prevent any malfunctioning.



Please make sure to remove the sticker. It may interfere with your height measurement.

4. Balance the BSM370

Use the bubble level indicator on the BSM370 to check it is level. Use the leveling screw underneath the foot plate of the BSM370 if it is not level.



If the equipment is not horizontally level, adjust the leveling screw on the opposite side of the bubble to place it at the center of the level indicator.

5. Power Connection

- 1 Connect the power adapter for the BSM370 which is placed on the back of the foot plate.



Make sure you use the power adapter and main cable provided by InBody.

- 2 Turn on the power switch. The head bar will move up automatically. Head bar of BSM370 will be automatically went up after turning the device on.



Be careful not to put any weight on the foot plate. If you step on the foot plate or put a heavy object on the foot plate, it will affect the calibration and measurements will not be accurate.



When pressure or weight is applied to the foot plate during self-calibration, **Error!** message appears. Turn the BSM370 off and on again after removing the material from the foot plate. Please do not apply pressure or weight to the foot plate during self-calibration.

6. Proper Posture

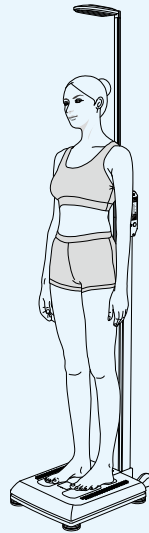
- 1 Turn your back towards the stand and stand on the foot plate.
- 2 Look straight ahead and stand upright. Do not lean on the stand.
- 3 While measuring, do not stain your body and maintain a relaxed posture.



Physically disabled persons or children should not attempt to take measurements alone, but instead should get help by have a parent hold them from the side or back to prevent injury or incorrect measurement.



If the examinee leans on the stand, the weight might get distributed and the results might be inaccurate. Be careful not to lean on the stand.



7. Results

When the test completed, the test result displays on LCD screen. When the examinee steps out from the foot plate, BSM370 will return to the home screen.

Please see the below example case when it is set for BMI \bar{A} automatic measurement mode.



Results Screen

BSM370	2009 / 09 / 12 / 09:15:37
• Height	156.5 cm
• Weight	54.5 kg
• BMI	22.3 kg/m²
InBody	
Thermal Printer Paper	



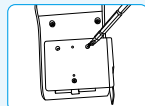
Customers in the US will be provided the lb/in version of the LCD and result paper.

When you use thermal printer

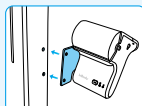


Thermal printers are sold separately.

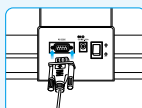
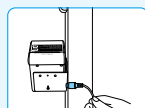
- 1 Connect the thermal printer firmly to the thermal printer base. Fasten 4 screws to fix them together.



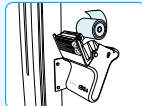
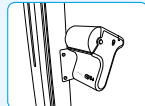
- 2 Remove the sticker on the side of the stand. Adjust the thermal printer tray's screw hole to the one of the stand. And screw tightly.



- 3 Thermal printer cables must be connected in the same manner as shown in the picture.



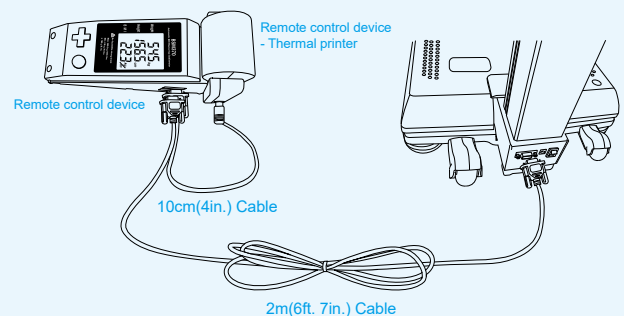
- 4 Place the printer paper as illustrated in the picture. Extend the paper one inch out of the printer.



Only the thermal printer & the printer paper provided by InBody can be used with the BSM370.

When you use remote control device

Remote control devices are connected in the same manner as shown in the picture.



Remote control device are sold separately.

Measurement Mode

Press the 'MODE' button in the home screen. Using \blacktriangle , \blacktriangledown , \blacktriangleleft , \blacktriangleright buttons, select the mode to use. Press 'ENTER' to save the mode.

Weight : Weight measurement mode

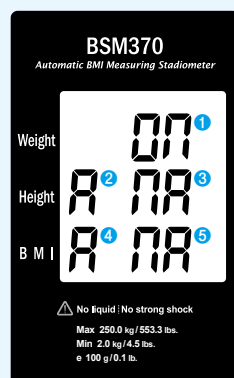
- 1 $\bar{0} \bar{7}$: When the examinee steps on the foot plate, this screen shows the weight.

Height : Height measurement mode

- 2 \bar{A} : When the examinee steps on the foot plate, the height is automatically measured.
- 3 $\bar{A} \bar{A}$: When the examinee steps on the foot plate, you can measure height by pressing the 'ENTER' button.

BMI : Weight and Height measurement mode.

- 4 \bar{A} : When the examinee steps on the foot plate, the weight and height are automatically measured.
- 5 $\bar{A} \bar{A}$: When the examinee steps on the foot plate, the weight is automatically measured. And then, you can measure height by pressing the 'ENTER' button.



The default measurement mode is set as BMI \bar{A} when the system is out of the factory.

SETUP

The setup menu consists of **weight offset**, **unit**, **date&time** and **speed**.

Press the 'SETUP' button in the home screen. Press the \blacktriangleleft , \blacktriangleright buttons to move menu you want to modify. You can change it using \blacktriangle , \blacktriangledown buttons. When you are finished with the modification, press the 'ENTER' button.

(1) WEIGHT OFFSET

Modifies the weight offset value. When you need to adjust weight due to clothes and accessories, you can set a weight value to compensate and the value will be reflected in the result.

(2) UNIT: Select units to be used. (kg/cm, lb./in.)

(3) DATE & TIME: Set the current date and time.

(4) SPEED

- 1 FAST: Weight measurement complete in four second regardless of examinee's movement.

- 2 NORMAL: Weight measurement complete when a examinee stay still in stable position.

InBody

InBody Co., Ltd. [HEAD OFFICE]

InBody Bldg., 625, Eonju-ro, Gangnam-gu, Seoul 06106 KOREA
TEL: +82-2-501-3939 FAX: +82-2-578-5669
Website: inbody.com E-mail: info@inbody.com

InBody reserves the right to modify the dimensions or exterior of BSM370 to improve the quality of the products, without consent of the customer.

